

# SAFETY AND SCHOOL ENVIRONMENT

## Non-CSAP Course Offerings

Your School Offers	does	does not
• art.....	<input checked="" type="checkbox"/>	<input type="checkbox"/>
• drama or theater.....	<input type="checkbox"/>	<input checked="" type="checkbox"/>
• music.....	<input checked="" type="checkbox"/>	<input type="checkbox"/>
• physical education.....	<input checked="" type="checkbox"/>	<input type="checkbox"/>
• opportunity for civic or community engagement.....	<input checked="" type="checkbox"/>	<input type="checkbox"/>
• internet safety program.....	<input checked="" type="checkbox"/>	<input type="checkbox"/>
• International Baccalaureate.....	<input type="checkbox"/>	<input checked="" type="checkbox"/>
• extracurricular activities.....	<input checked="" type="checkbox"/>	<input type="checkbox"/>
• athletics.....	<input type="checkbox"/>	<input checked="" type="checkbox"/>
• preschool program.....	<input type="checkbox"/>	<input checked="" type="checkbox"/>
• full-day kindergarten program.....	<input checked="" type="checkbox"/>	<input type="checkbox"/>
• before-and-after-school care program.....	<input type="checkbox"/>	<input checked="" type="checkbox"/>

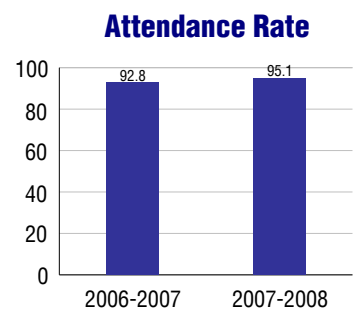
## Safety and Discipline

Safe schools are a top priority for parents, teachers, and communities. Your school safety and discipline record for the 2007-2008 school year is:

Type of Incident	Number of Incidents Reported	Percent of Total Incidents
Substance Abuse - Drugs		
Substance Abuse - Alcohol		
Substance Abuse - Tobacco	1	6.7%
Felony Assaults		
Fights		
Possession of Dangerous Weapons	3	20.0%
Other Violations Code of Conduct	11	73.3%

## Student Attendance and School Calendar

2007-2008	Your School
Enrollment	279
Average Daily Attendance	265
Student Dropouts	N/A



## Student Information Over Time

	2005-2006	2006-2007	2007-2008
Student Enrollment Stability	90.8%	87.6%	92.5%
Students Eligible for Free and Reduced Lunch	81.3%	82.6%	74.6%

For more information and further details about this report, visit [www.state.co.us/schools](http://www.state.co.us/schools)  
 Colorado Department of Education, 201 East Colfax Ave. Denver, CO 80203  
**Westminster Elementary School**  
 0070/9462/E  
 7482 Irving Street . Westminster, CO 80030 . 303-428-2494  
 10/20/2008

# DISTRICT TAXPAYER'S REPORT

## Sources of School District Revenue 2007

Local Tax Contribution	\$32,416,166
State Tax Contribution	49,521,514
Federal Grants	9,282,912
State Grants	3,969,663
Private/Partnership Grants	48,326
Other Discretionary Income	6,005,675
<b>Total District Operating Revenue</b>	<b>\$101,244,256</b>
Long Term Debt Proceeds	106,534,604
<b>Total District Revenue</b>	<b>\$207,778,860</b>
<b>Total District Operating Revenue Per Pupil =</b>	<b>\$10,129</b>
<b>Total District Revenue Per Pupil (Including Long Term Debt) =</b>	<b>\$20,788</b>
<b>District Per Pupil Operating Revenue =</b>	<b>\$6,291</b>
<b>State Average Per Pupil Operating Revenue =</b>	<b>\$6,080</b>

## District Use of Funds 2007

Instructional & Instructional Support	\$62,424,078
Administration	8,090,825
Building & Facilities Maintenance	8,484,349
Operational Expenditures	8,102,247
Debt Service	6,531,816
Other Expenditures	4,020,960
<b>Total District Operating Expenditures</b>	<b>\$97,654,275</b>
Capital Expenditures	2,045,237
<b>Total District Use of Funds</b>	<b>\$99,699,512</b>

## District Debt and Capital Construction & Equipment

Total Outstanding Bonded Debt	\$106,700,000
Average Annual Percentage Interest Rate on Debt	3.65%
Amount Raised from Most Recent Bond	\$98,600,000
Amount Spent on New Buildings During Last 2 Years	\$241,785

## Accreditation

Accreditation is Colorado's primary accountability system, incorporating achievement levels, academic growth, achievement gaps, post-secondary readiness, improvement planning, and compliance. The state accredits districts and districts accredit individual schools.

District Accreditation Status for the 2007-2008 school year: Notice with Support

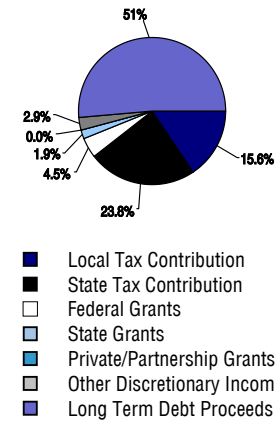
## Voter Approved Funding Changes

Your community did  /did not  hold an election in November 2006

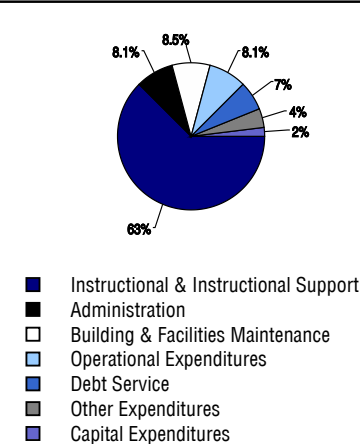
The following items have been approved by voters:

- TABOR**  
Override
- Bond**  
\$98,600,000
- Mill Levy**  
Increase

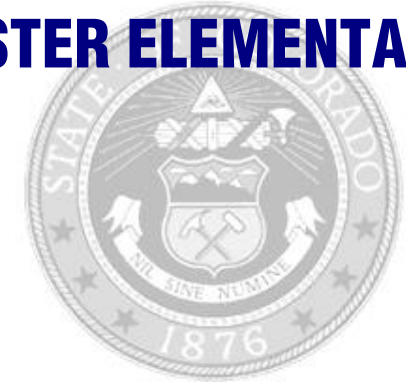
## District Source of Funds 2007



## District Use of Funds 2007



# WESTMINSTER ELEMENTARY SCHOOL



**WESTMINSTER 50**

<http://www.adams50.org/>

## School Accountability Report 2007-2008 School Year

### School Performance Summary

**Overall Academic Performance on State Assessments** Low

**Academic Growth of Students** Low

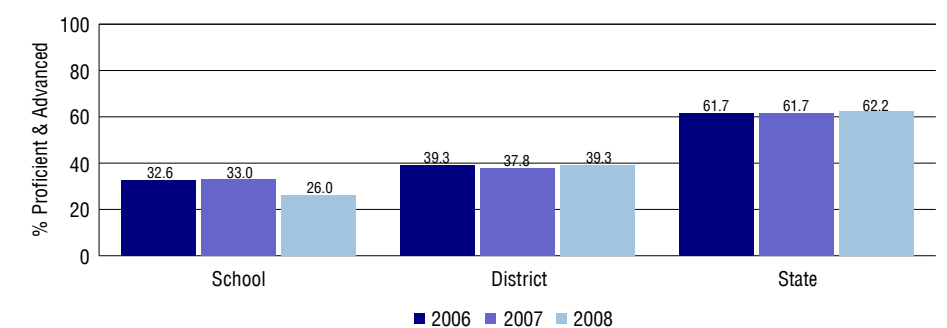
#### Overall Academic Performance on State Assessments

Each school in the State received a rating of "Excellent", "High", "Average", "Low", or "Unsatisfactory" for student academic performance based on 2007-2008 CSAP and COACT results. The rating is calculated using weighted percentages of each CSAP proficiency level for all content area and grade results for the school, as well as average COACT Reading, Writing, and Math Grade 11 results.

#### Academic Growth of Students

Each school in the State received a rating of "Low", "Typical", or "High" for student academic growth based on CSAP results. The calculation method is new for 2007-2008. The rating is calculated using student percentile scores matched over two years. More information about the Overall Academic Performance rating and Academic Growth of Students calculations can be found here: [http://www.cde.state.co.us/cdeassess/SAR\\_Info.html](http://www.cde.state.co.us/cdeassess/SAR_Info.html).

### Percent Proficient and Advanced for Elementary Grades for All Content Areas



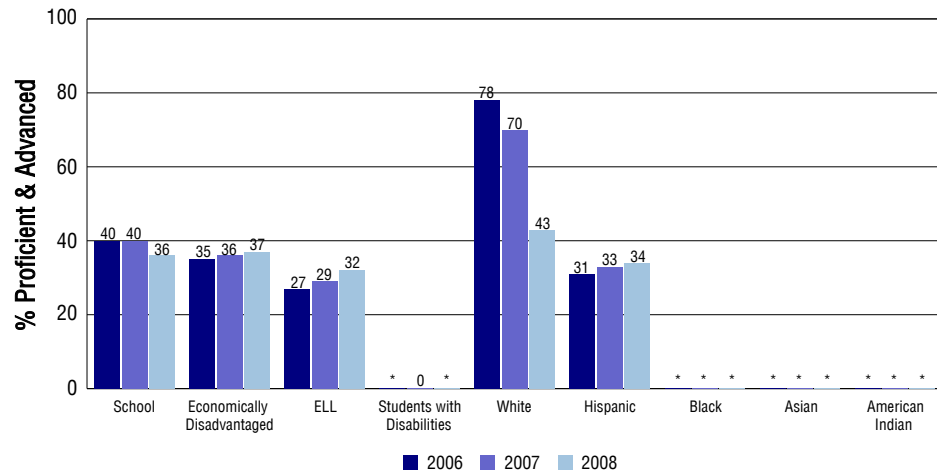
### Student Test Scores Used For Calculating Overall Academic Performance

73.3%	Test Scores Counted
20.3%	Test Scores not used due to Language
6.4%	Test Scores not used due to New Student

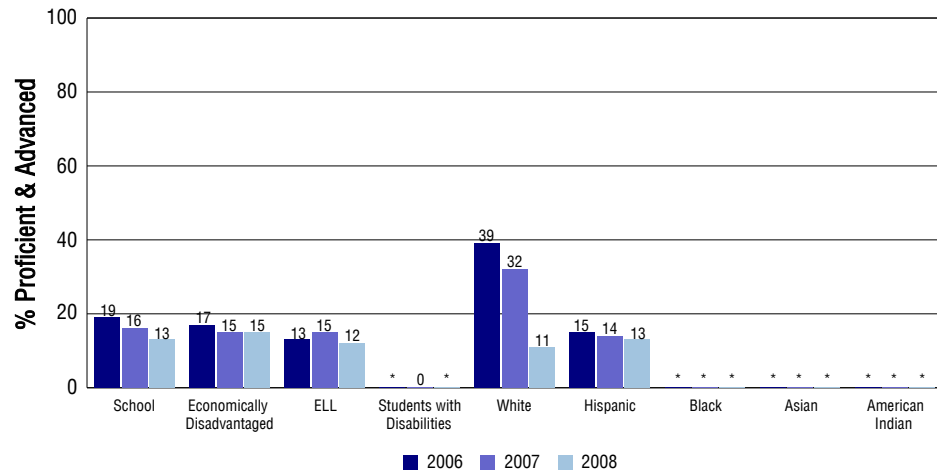
## STUDENT PERFORMANCE

These graphs show the percent Proficient and Advanced trends over the past three years for Reading, Writing, and Math. Results are presented for the entire school for all reported grades as well as for different subgroups. Note: \* indicates any group with less than 16 student results to be reported.

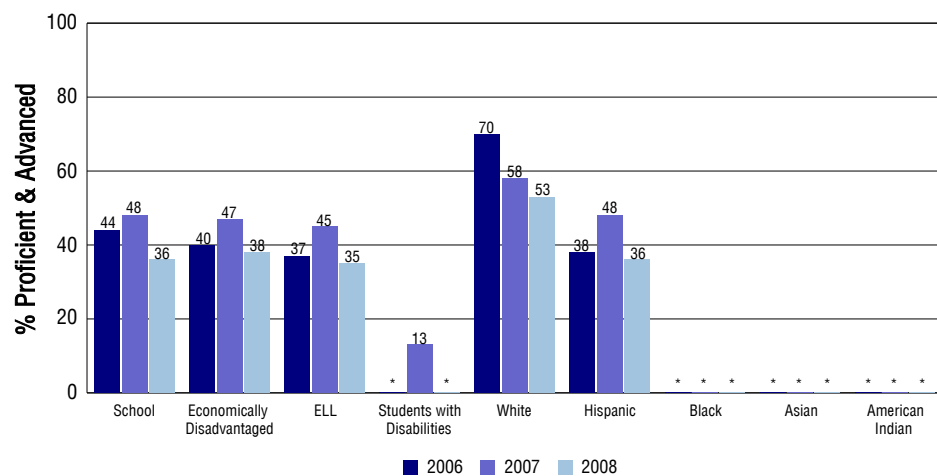
### Reading



### Writing



### Math



## SCHOOL INFORMATION

### School Pride (as submitted by your district)

- We have five educators working to develop district standards and/or present the Standards Based System model to district staff.
- JoAnn Weaver was selected as an Office Max "Star Teacher" for her dedication, care and willingness to lead many after school and lunch clubs.
- Two of our students placed in the top 10 at the Adams 50 District Spelling Bee.
- Boys Comics, Garden, Math and Science, School Store, Technology, Homework, Literacy and Art clubs are offered.

### School Goals (as submitted by your district)

97% of grade 3, 79% of grade 4, and 78% of grade 5 students will score Proficient or Advanced on CSAP Math. 60% of grades 3 and 4, and 74% of grade 5 students will score Proficient or Advanced on CSAP Reading. 67% of 3rd grade, 50% of 4th grade, and 74% of 5th grade students will score Proficient or Advanced on CSAP Writing. We will decrease the number of students scoring Unsatisfactory or Partially Proficient on CSAP Reading, Writing, Math and Science by at least 10%. 60% of kindergarteners, first graders, and second graders will be on grade level at the end of the year as measured by the Adams 50 District Reading Assessment.

### No Child Left Behind - Adequate Yearly Progress

Did your school make AYP in reading? Yes Math? No  
 How many targets does your school have? 24 Met? 20

Based on this school's academic performance, your child may be eligible for one or more of the following; ask your school if your child qualifies for:

Extra academic instruction either before or after-school, or in the summer  
 Mentoring

For additional information regarding Adequate Yearly Progress please visit  
<http://www.cde.state.co.us/FedPrograms/ayp/index.asp>

### How Westminster Elementary School Compares To Elementary Schools Within A 75-Mile Radius

School	Program Type	Academic Performance	Academic Growth
Ricardo Flores Magon Academy(1)	Charter	No Rating	No Rating
Crown Pointe Charter Academy	Charter	High	High
Fairview Elementary School		Low	Typical
Skyline Vista Elementary School		Low	High
Harris Park Elementary School		Low	Typical
Meiklejohn Elementary(2)		High	Typical
Clara E. Metz Elementary School		Low	Typical
Francis M. Day Elementary School		Low	Low
Baker Elementary School		Low	Low
Flynn Elementary School		Average	High

1 Located in Charter School Institute School District.  
 2 Located in Jefferson County R-1 School District.

## ABOUT OUR STAFF

### School Employment

Each year, your district reports to the Colorado Department of Education on the number of adults who work in your school, as well as the type of work they do. Last year, your school employed:

	Your School		District	
	Full Time	Part Time	Full Time	Part Time
Teachers	18	1	552	20
Paraprofessionals	4	1	166	15
Administrators	1	0	53	1
Other Professionals	2	0	89	8
School Support	3	2	199	69
School Counselors	0	0	15	1
School Librarians	0	0	5	1
<b>Total Staff</b>	32		1191	

### Students per Teacher Ratio

	Student Enrollment	Students per Teacher
Grade 1	53	17.5
Grade 2	55	18.2
Grade 3	43	14.2
Grade 4	34	11.2
Grade 5	40	13.2

### Professional Experience of Teachers

	Your School	District
Average years of teaching experience	13	11
Percent of teachers teaching in the subject in which they received their degree	N/A	N/A
Number of teachers with Masters or Doctoral degrees	11	349
Teachers with 3 years or more of teaching experience	16	526
Teachers with less than 3 years of teaching experience	3	46
Number of professional development days	4	4

### Salaries

	Your School	District	State
Average Teacher Salary	\$53,302	\$54,466	\$47,494
Average Administrator Salary	\$86,000	\$96,277	\$80,444

Principal: Lorynda Archibeque Sampson

Number of years as Principal at this school: 1 (New Hire 2007/2008)

Number of years as Principal at any school: 1