

SAFETY AND SCHOOL ENVIRONMENT

Non-CSAP Course Offerings

Your School Offers	does	does not
• art.....	<input checked="" type="checkbox"/>	<input type="checkbox"/>
• drama or theater.....	<input checked="" type="checkbox"/>	<input type="checkbox"/>
• music.....	<input checked="" type="checkbox"/>	<input type="checkbox"/>
• physical education.....	<input checked="" type="checkbox"/>	<input type="checkbox"/>
• opportunity for civic or community engagement.....	<input checked="" type="checkbox"/>	<input type="checkbox"/>
• internet safety program.....	<input checked="" type="checkbox"/>	<input type="checkbox"/>
• International Baccalaureate.....	<input type="checkbox"/>	<input checked="" type="checkbox"/>
• extracurricular activities.....	<input checked="" type="checkbox"/>	<input type="checkbox"/>
• athletics.....	<input type="checkbox"/>	<input checked="" type="checkbox"/>
• preschool program.....	<input type="checkbox"/>	<input checked="" type="checkbox"/>
• full-day kindergarten program.....	<input type="checkbox"/>	<input checked="" type="checkbox"/>
• before-and-after-school care program.....	<input checked="" type="checkbox"/>	<input type="checkbox"/>

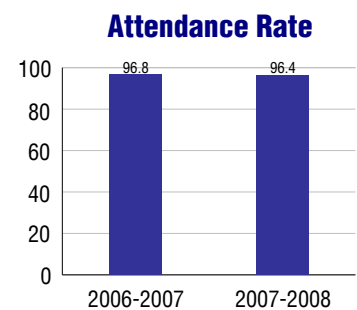
Safety and Discipline

Safe schools are a top priority for parents, teachers, and communities. Your school safety and discipline record for the 2007-2008 school year is:

Type of Incident	Number of Incidents Reported	Percent of Total Incidents
Substance Abuse - Drugs		
Substance Abuse - Alcohol		
Substance Abuse - Tobacco		
Felony Assaults		
Fights		
Possession of Dangerous Weapons		
Other Violations Code of Conduct	14	100.0%

Student Attendance and School Calendar

2007-2008	Your School
Enrollment	529
Average Daily Attendance	510
Student Dropouts	N/A



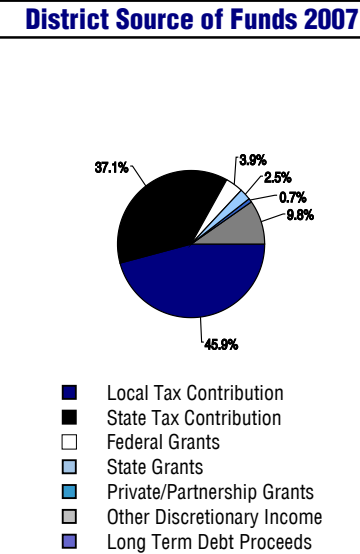
Student Information Over Time

	2005-2006	2006-2007	2007-2008
Student Enrollment Stability	98.8%	98.5%	97.9%
Students Eligible for Free and Reduced Lunch	6.1 %	4.4 %	4.7 %

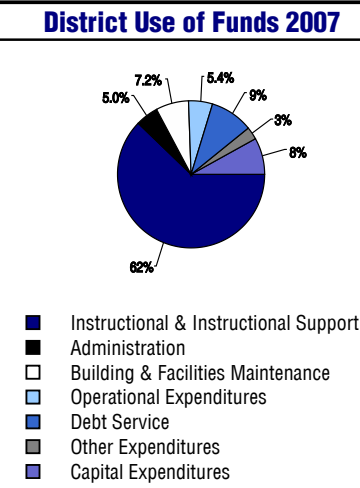
For more information and further details about this report, visit www.state.co.us/schools
 Colorado Department of Education, 201 East Colfax Ave. Denver, CO 80203
Homestead Elementary School
 0130/4078/E
 7451 South Homestead Parkway . Centennial, CO 80112 . 720-554-3700
 10/20/2008

DISTRICT TAXPAYER'S REPORT

Sources of School District Revenue	2007
Local Tax Contribution	\$217,021,532
State Tax Contribution	175,442,154
Federal Grants	18,487,556
State Grants	11,734,015
Private/Partnership Grants	3,463,112
Other Discretionary Income	46,539,895
Total District Operating Revenue	\$472,688,264
Long Term Debt Proceeds	0
Total District Revenue	\$472,688,264
Total District Operating Revenue Per Pupil =	\$10,050
Total District Revenue Per Pupil (Including Long Term Debt) =	\$10,050
District Per Pupil Operating Revenue =	\$6,027
State Average Per Pupil Operating Revenue =	\$6,080



District Use of Funds	2007
Instructional & Instructional Support	\$308,666,333
Administration	24,606,894
Building & Facilities Maintenance	35,908,464
Operational Expenditures	26,724,143
Debt Service	46,766,323
Other Expenditures	13,236,600
Total District Operating Expenditures	\$455,908,757
Capital Expenditures	40,218,282
Total District Use of Funds	\$496,127,039



District Debt and Capital Construction & Equipment

Total Outstanding Bonded Debt	\$402,325,000
Average Annual Percentage Interest Rate on Debt	4.65%
Amount Raised from Most Recent Bond	\$167,500,000
Amount Spent on New Buildings During Last 2 Years	\$60,464,505

Accreditation

Accreditation is Colorado's primary accountability system, incorporating achievement levels, academic growth, achievement gaps, post-secondary readiness, improvement planning, and compliance. The state accredits districts and districts accredit individual schools.

District Accreditation Status for the 2007-2008 school year:

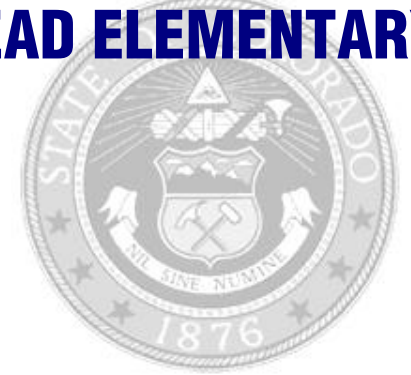
Voter Approved Funding Changes

Your community did /did not hold an election in November 2006

The following items have been approved by voters:

- TABOR Override
- Bond
- Mill Levy Increase

HOMESTEAD ELEMENTARY SCHOOL



CHERRY CREEK 5

<http://www.ccsd.k12.co.us/index.htm>

School Accountability Report 2007-2008 School Year

School Performance Summary

Overall Academic Performance on State Assessments **Excellent**

Academic Growth of Students **High**

Winner of a John Irwin School of Excellence for the 2007-2008 School Year

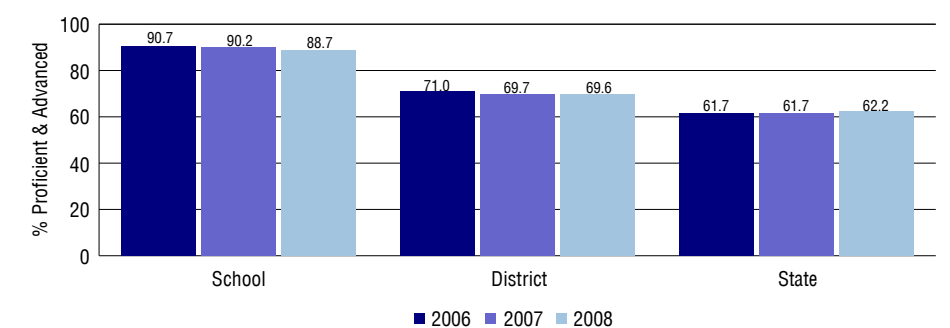
Overall Academic Performance on State Assessments

Each school in the State received a rating of "Excellent", "High", "Average", "Low", or "Unsatisfactory" for student academic performance based on 2007-2008 CSAP and COACT results. The rating is calculated using weighted percentages of each CSAP proficiency level for all content area and grade results for the school, as well as average COACT Reading, Writing, and Math Grade 11 results.

Academic Growth of Students

Each school in the State received a rating of "Low", "Typical", or "High" for student academic growth based on CSAP results. The calculation method is new for 2007-2008. The rating is calculated using student percentile scores matched over two years. More information about the Overall Academic Performance rating and Academic Growth of Students calculations can be found here: http://www.cde.state.co.us/cdeassess/SAR_Info.html.

Percent Proficient and Advanced for Elementary Grades for All Content Areas



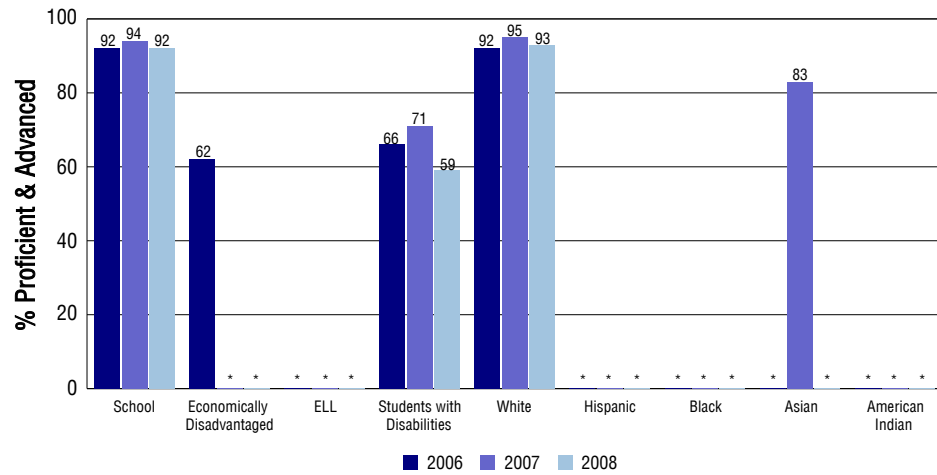
Student Test Scores Used For Calculating Overall Academic Performance

98.3%	Test Scores Counted
0.7%	Test Scores not used due to Language
1.0%	Test Scores not used due to New Student

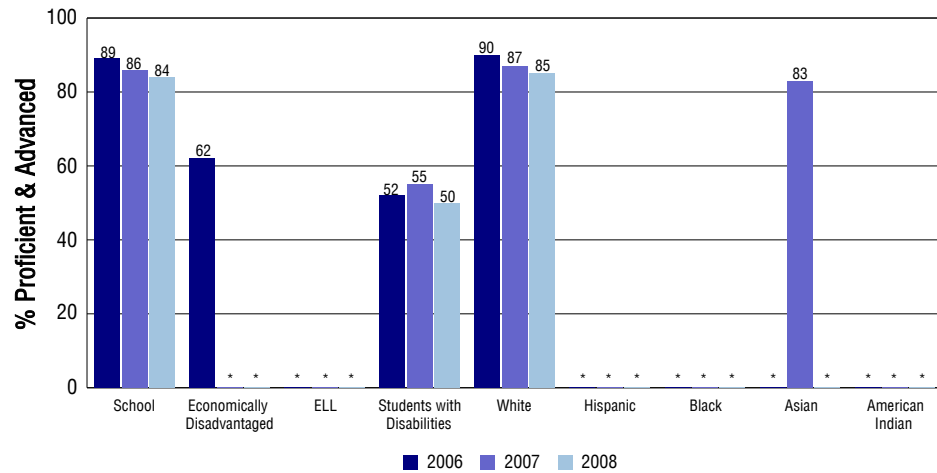
STUDENT PERFORMANCE

These graphs show the percent Proficient and Advanced trends over the past three years for Reading, Writing, and Math. Results are presented for the entire school for all reported grades as well as for different subgroups. Note: * indicates any group with less than 16 student results to be reported.

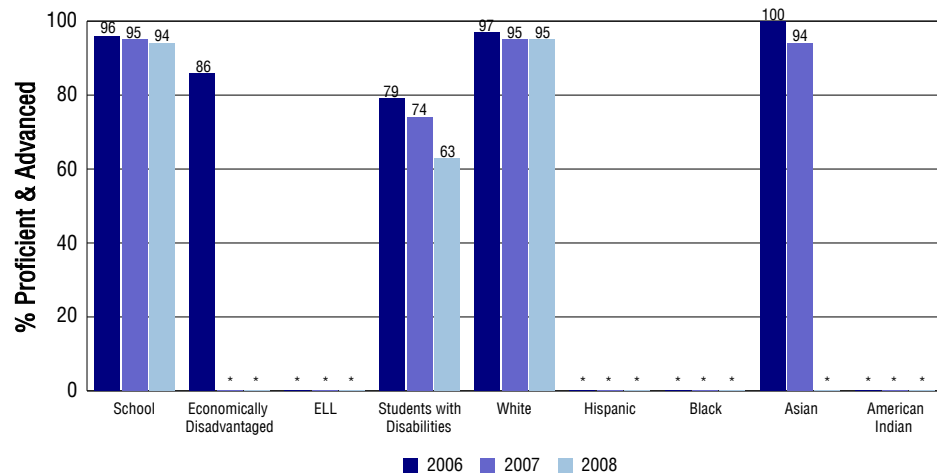
Reading



Writing



Math



SCHOOL INFORMATION

School Pride (as submitted by your district)

- We offer a variety of extracurricular opportunities including math/spelling competitions, choir, band, drama, student council, science, art clubs, and others.
- State of the art technology is integrated into classroom instruction. Students are engaged in podcasting, classroom blogs, and SMART Board technology.
- Our parent/community organization has raised funding to support technology, curriculum and instruction which impacts the success of our children.
- Homestead has been ranked in the Top 10 of all elementary schools in the state and is a consistent winner of the John Irwin School of Excellence Award.

School Goals (as submitted by your district)

We are committed to: -Providing a safe and caring environment for learning, where students feel respected and valued. -Holding high and clear expectations for the growth and achievement of each student. -Developing meaningful relationships with students a

No Child Left Behind - Adequate Yearly Progress

Did your school make AYP in reading? Yes Math? Yes
 How many targets does your school have? 14 Met? 14

Based on this school's academic performance, your child may be eligible for one or more of the following; ask your school if your child qualifies for:

Extra academic instruction either before or after-school, or in the summer
 Mentoring

For additional information regarding Adequate Yearly Progress please visit
<http://www.cde.state.co.us/FedPrograms/ayp/index.asp>

How Homestead Elementary School Compares To Elementary Schools Within A 75-Mile Radius

School	Program Type	Academic Performance	Academic Growth
Dry Creek Elementary School	Magnet	Excellent	High
Walnut Hills Community Elementary School	Magnet	High	Typical
Heritage Elementary School		High	Typical
Willow Creek Elementary School		Excellent	Typical
Ames Elementary School(1)		High	High
Acres Green Elementary School(2)		Excellent	High
Lois Lenski Elementary School(1)		Excellent	High
American Academy At Castle Pines Charter(2)	Charter	High	High
Eagle Ridge Elementary School(2)		High	High
Greenwood Elementary School		Excellent	Typical

1 Located in Littleton 6 School District.
 2 Located in Douglas County RE 1 School District.

ABOUT OUR STAFF

School Employment

Each year, your district reports to the Colorado Department of Education on the number of adults who work in your school, as well as the type of work they do. Last year, your school employed:

	Your School		District	
	Full Time	Part Time	Full Time	Part Time
Teachers	25	6	2749	311
Paraprofessionals	4	17	608	922
Administrators	1	0	143	3
Other Professionals	5	0	473	105
School Support	3	2	1148	174
School Counselors	0	0	65	5
School Librarians	0	0	55	5
Total Staff	63		6751	

Students per Teacher Ratio

	Student Enrollment	Students per Teacher
Grade 1	76	14.7
Grade 2	97	18.7
Grade 3	78	15.1
Grade 4	94	18.2
Grade 5	93	18

Professional Experience of Teachers

	Your School	District
Average years of teaching experience	13	12
Percent of teachers teaching in the subject in which they received their degree	N/A	N/A
Number of teachers with Masters or Doctoral degrees	22	1994
Teachers with 3 years or more of teaching experience	28	2754
Teachers with less than 3 years of teaching experience	3	306
Number of professional development days	7	7

Salaries

	Your School	District	State
Average Teacher Salary	\$58,027	\$57,152	\$47,494
Average Administrator Salary	\$82,500	\$90,935	\$80,444

Principal: Scott Schleich

Number of years as Principal at this school: 4

Number of years as Principal at any school: 4