

SAFETY AND SCHOOL ENVIRONMENT

Non-CSAP Course Offerings

Your School Offers	does	does not
• art.....	<input checked="" type="checkbox"/>	<input type="checkbox"/>
• drama or theater.....	<input type="checkbox"/>	<input checked="" type="checkbox"/>
• music.....	<input checked="" type="checkbox"/>	<input type="checkbox"/>
• physical education.....	<input checked="" type="checkbox"/>	<input type="checkbox"/>
• opportunity for civic or community engagement.....	<input checked="" type="checkbox"/>	<input type="checkbox"/>
• internet safety program.....	<input checked="" type="checkbox"/>	<input type="checkbox"/>
• International Baccalaureate.....	<input type="checkbox"/>	<input checked="" type="checkbox"/>
• extracurricular activities.....	<input checked="" type="checkbox"/>	<input type="checkbox"/>
• athletics.....	<input checked="" type="checkbox"/>	<input type="checkbox"/>
• career and technical education.....	<input checked="" type="checkbox"/>	<input type="checkbox"/>
• honors.....	<input checked="" type="checkbox"/>	<input type="checkbox"/>

Safety and Discipline

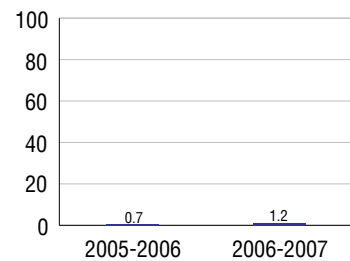
Safe schools are a top priority for parents, teachers, and communities. Your school safety and discipline record for the 2007-2008 school year is:

Type of Incident	Number of Incidents Reported	Percent of Total Incidents
Substance Abuse - Drugs	3	0.7%
Substance Abuse - Alcohol		
Substance Abuse - Tobacco	1	0.2%
Felony Assaults	1	0.2%
Fights	26	6.3%
Possession of Dangerous Weapons	3	0.7%
Other Violations Code of Conduct	378	91.7%

Student Attendance and School Calendar

2007-2008	Your School
Enrollment	1,589
Average Daily Attendance	1,481
Student Dropouts	1.2%

Dropout Rate



Student Information Over Time

	2005-2006	2006-2007	2007-2008
Student Enrollment Stability	94%	96.4%	92.9%
Students Eligible for Free and Reduced Lunch	48.6 %	54.8 %	59.7 %

For more information and further details about this report, visit www.state.co.us/schools
Colorado Department of Education, 201 East Colfax Ave. Denver, CO 80203

Prairie Middle School
0130/7158/M

12600 East Jewell Avenue . Aurora, CO 80012 . 720-747-3000

10/20/2008

DISTRICT TAXPAYER'S REPORT

Sources of School District Revenue 2007

Local Tax Contribution	\$217,021,532
State Tax Contribution	175,442,154
Federal Grants	18,487,556
State Grants	11,734,015
Private/Partnership Grants	3,463,112
Other Discretionary Income	46,539,895
Total District Operating Revenue	\$472,688,264
Long Term Debt Proceeds	0

Total District Revenue	\$472,688,264
Total District Operating Revenue Per Pupil =	\$10,050
Total District Revenue Per Pupil (Including Long Term Debt) =	\$10,050
District Per Pupil Operating Revenue =	\$6,027
State Average Per Pupil Operating Revenue =	\$6,080

District Use of Funds 2007

Instructional & Instructional Support	\$308,666,333
Administration	24,606,894
Building & Facilities Maintenance	35,908,464
Operational Expenditures	26,724,143
Debt Service	46,766,323
Other Expenditures	13,236,600
Total District Operating Expenditures	\$455,908,757
Capital Expenditures	40,218,282
Total District Use of Funds	\$496,127,039

District Debt and Capital Construction & Equipment

Total Outstanding Bonded Debt	\$402,325,000
Average Annual Percentage Interest Rate on Debt	4.65%
Amount Raised from Most Recent Bond	\$167,500,000
Amount Spent on New Buildings During Last 2 Years	\$60,464,505

Accreditation

Accreditation is Colorado's primary accountability system, incorporating achievement levels, academic growth, achievement gaps, post-secondary readiness, improvement planning, and compliance. The state accredits districts and districts accredit individual schools.

District Accreditation Status for the 2007-2008 school year:

Voter Approved Funding Changes

Your community did /did not hold an election in November 2006

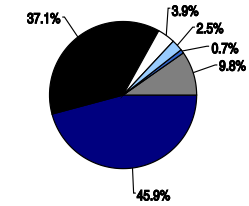
The following items have been approved by voters:

TABOR Override

Bond

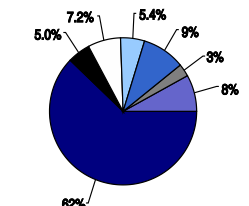
Mill Levy Increase

District Source of Funds 2007



Local Tax Contribution
State Tax Contribution
Federal Grants
State Grants
Private/Partnership Grants
Other Discretionary Income
Long Term Debt Proceeds

District Use of Funds 2007



Instructional & Instructional Support
Administration
Building & Facilities Maintenance
Operational Expenditures
Debt Service
Other Expenditures
Capital Expenditures

PRAIRIE MIDDLE SCHOOL



CHERRY CREEK 5

<http://www.ccsd.k12.co.us/index.htm>

School Accountability Report 2007-2008 School Year

School Performance Summary

Overall Academic Performance on State Assessments **Average**

Academic Growth of Students **High**

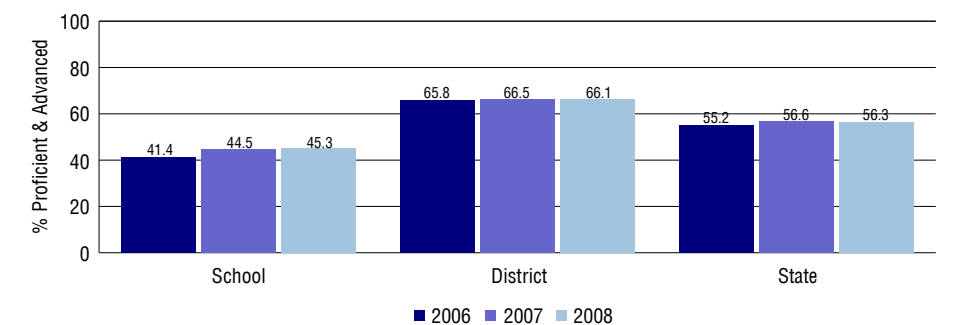
Overall Academic Performance on State Assessments

Each school in the State received a rating of "Excellent", "High", "Average", "Low", or "Unsatisfactory" for student academic performance based on 2007-2008 CSAP and COACT results. The rating is calculated using weighted percentages of each CSAP proficiency level for all content area and grade results for the school, as well as average COACT Reading, Writing, and Math Grade 11 results.

Academic Growth of Students

Each school in the State received a rating of "Low", "Typical", or "High" for student academic growth based on CSAP results. The calculation method is new for 2007-2008. The rating is calculated using student percentile scores matched over two years. More information about the Overall Academic Performance rating and Academic Growth of Students calculations can be found here: http://www.cde.state.co.us/cdeassess/SAR_Info.html.

Percent Proficient and Advanced for Middle Grades for All Content Areas



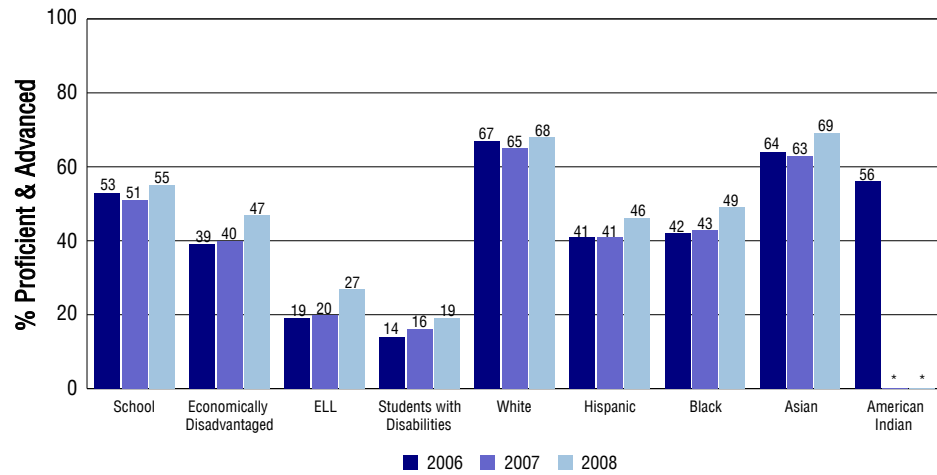
Student Test Scores Used For Calculating Overall Academic Performance

86.6%	Test Scores Counted
6.7%	Test Scores not used due to Language
6.7%	Test Scores not used due to New Student

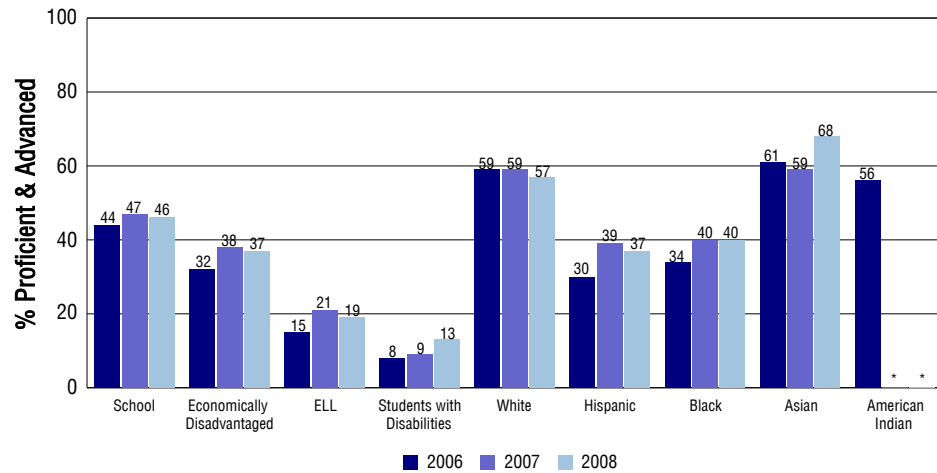
STUDENT PERFORMANCE

These graphs show the percent Proficient and Advanced trends over the past three years for Reading, Writing, and Math. Results are presented for the entire school for all reported grades as well as for different subgroups. Note: * indicates any group with less than 16 student results to be reported.

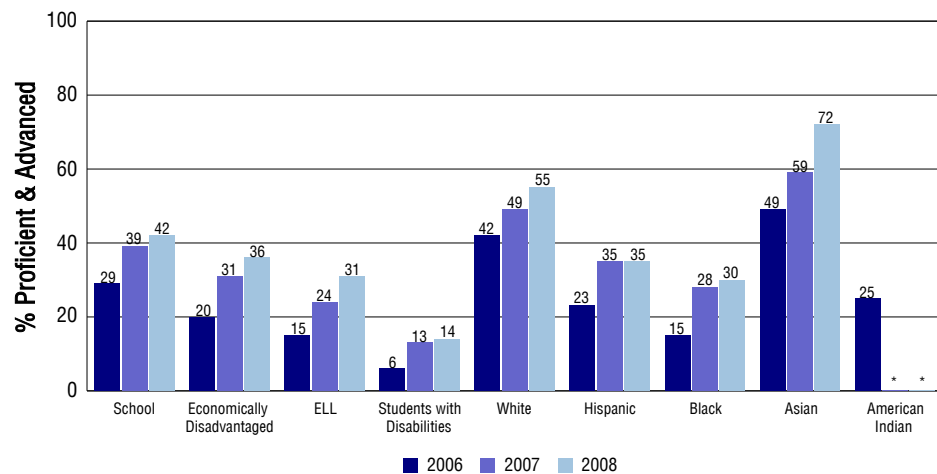
Reading



Writing



Math



SCHOOL INFORMATION

School Pride (as submitted by your district)

- Our parent community is very involved and supportive of our students and school staff.
- Our students participate in many leadership opportunities that promote strong citizenship, communication, cultural awareness and problem solving skills.
- Our 6th grade students have 90 minutes of math each day to better prepare them for the 21st Century.
- Students have access to Pre-AP College Board Springboard Language Arts curriculum designed to promote high-level thinking with challenging/advanced coursework.

School Goals (as submitted by your district)

Through the creation of literacy rich classrooms, all students will increase proficiency in reading and writing by 5% as demonstrated on CSAP matched group and unmatched data. Our Hispanic and Black students will increase an additional 3% in reading and w

No Child Left Behind - Adequate Yearly Progress

Did your school make AYP in reading?	No	Math?	No
How many targets does your school have?	48	Met?	41

Based on this school's academic performance, your child may be eligible for one or more of the following; ask your school if your child qualifies for:

Extra academic instruction either before or after-school, or in the summer
Mentoring

For additional information regarding Adequate Yearly Progress please visit
<http://www.cde.state.co.us/FedPrograms/ayp/index.asp>

How Prairie Middle School Compares To Middle Schools Within A 75-Mile Radius

School	Program Type	Academic Performance	Academic Growth
Aurora Hills Middle School(1)		Average	Typical
Lotus School For Excellence(1)	Charter	Average	Typical
William (Bill) Roberts K-8 School(2)		Average	Typical
Challenge School	Magnet	Excellent	High
South Middle School(1)		Low	Typical
Highline Academy Charter School(2)	Charter	Average	Typical
Hamilton Middle School(2)		High	High
Aurora Academy Charter School(1)	Charter	High	High
Mrachek Middle School(1)		Low	Low
Place Middle School(2)		Low	High

1 Located in Adams-Arapahoe 28J School District.
2 Located in Denver County 1 School District.

ABOUT OUR STAFF

School Employment

Each year, your district reports to the Colorado Department of Education on the number of adults who work in your school, as well as the type of work they do. Last year, your school employed:

	Your School		District	
	Full Time	Part Time	Full Time	Part Time
Teachers	100	5	2749	311
Paraprofessionals	13	4	608	922
Administrators	3	0	143	3
Other Professionals	12	0	473	105
School Support	18	11	1148	174
School Counselors	3	0	65	5
School Librarians	1	0	55	5
Total Staff	170		6751	

Students per Teacher Ratio

	Student Enrollment	Students per Teacher
Grade 6	526	13.5
Grade 7	547	17.2
Grade 8	516	15.8

Professional Experience of Teachers

	Your School	District
Average years of teaching experience	10	12
Percent of teachers teaching in the subject in which they received their degree	68%	76%
Number of teachers with Masters or Doctoral degrees	56	1994
Teachers with 3 years or more of teaching experience	87	2754
Teachers with less than 3 years of teaching experience	18	306
Number of professional development days	7	7

Salaries

	Your School	District	State
Average Teacher Salary	\$52,203	\$57,152	\$47,494
Average Administrator Salary	\$83,973	\$90,935	\$80,444

Principal: Kandy Cassaday

Number of years as Principal at this school: 7

Number of years as Principal at any school: 7