

# SAFETY AND SCHOOL ENVIRONMENT

## Non-CSAP Course Offerings

Your School Offers	does	does not
• art.....	<input checked="" type="checkbox"/>	<input type="checkbox"/>
• drama or theater.....	<input checked="" type="checkbox"/>	<input type="checkbox"/>
• music.....	<input checked="" type="checkbox"/>	<input type="checkbox"/>
• physical education.....	<input checked="" type="checkbox"/>	<input type="checkbox"/>
• opportunity for civic or community engagement.....	<input checked="" type="checkbox"/>	<input type="checkbox"/>
• internet safety program.....	<input checked="" type="checkbox"/>	<input type="checkbox"/>
• International Baccalaureate.....	<input type="checkbox"/>	<input checked="" type="checkbox"/>
• extracurricular activities.....	<input checked="" type="checkbox"/>	<input type="checkbox"/>
• athletics.....	<input checked="" type="checkbox"/>	<input type="checkbox"/>
• career and technical education.....	<input checked="" type="checkbox"/>	<input type="checkbox"/>
• advanced placement.....	<input checked="" type="checkbox"/>	<input type="checkbox"/>
• honors.....	<input checked="" type="checkbox"/>	<input type="checkbox"/>

## Safety and Discipline

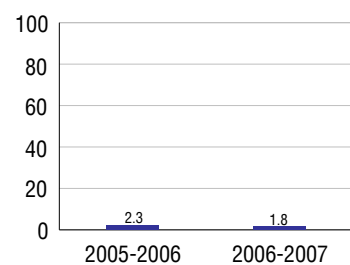
Safe schools are a top priority for parents, teachers, and communities. Your school safety and discipline record for the 2007-2008 school year is:

Type of Incident	Number of Incidents Reported	Percent of Total Incidents
Substance Abuse - Drugs	14	23.3%
Substance Abuse - Alcohol	10	16.7%
Substance Abuse - Tobacco	2	3.3%
Felony Assaults		
Fights	6	10.0%
Possession of Dangerous Weapons	1	1.7%
Other Violations Code of Conduct	27	45.0%

## Student Attendance and School Calendar

2007-2008	Your School
Enrollment	1,604
Average Daily Attendance	1,545
Student Dropouts	1.8%

## Dropout Rate



## Student Information Over Time

	2005-2006	2006-2007	2007-2008
Student Enrollment Stability	98.6%	97.3%	98.3%
Students Eligible for Free and Reduced Lunch	4.7 %	5.3 %	4.4 %

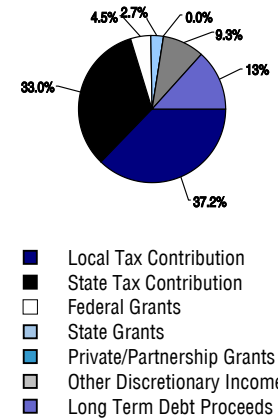
For more information and further details about this report, visit [www.state.co.us/schools](http://www.state.co.us/schools)  
 Colorado Department of Education, 201 East Colfax Ave. Denver, CO 80203  
**Ralston Valley Senior High School**  
 1420/7239/H  
 13355 West 80th Avenue . Arvada, CO 80005 . 303-982-3514  
 10/20/2008

# DISTRICT TAXPAYER'S REPORT

## Sources of School District Revenue 2007

Local Tax Contribution	\$356,019,175
State Tax Contribution	315,431,843
Federal Grants	42,717,586
State Grants	25,793,428
Private/Partnership Grants	171,807
Other Discretionary Income	89,083,874
<b>Total District Operating Revenue</b>	<b>\$829,217,713</b>
Long Term Debt Proceeds	126,985,259
<b>Total District Revenue</b>	<b>\$956,202,972</b>
<b>Total District Operating Revenue Per Pupil =</b>	<b>\$10,226</b>
<b>Total District Revenue Per Pupil (Including Long Term Debt) =</b>	<b>\$11,792</b>
<b>District Per Pupil Operating Revenue =</b>	<b>\$5,933</b>
<b>State Average Per Pupil Operating Revenue =</b>	<b>\$6,080</b>

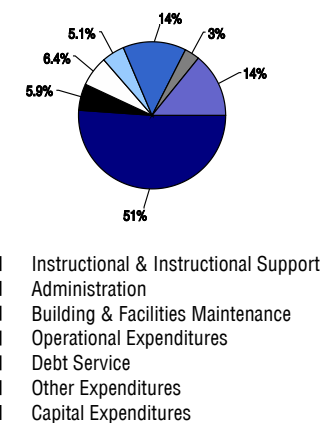
## District Source of Funds 2007



## District Use of Funds 2007

Instructional & Instructional Support	\$480,277,698
Administration	55,768,256
Building & Facilities Maintenance	60,396,294
Operational Expenditures	48,003,486
Debt Service	129,658,039
Other Expenditures	31,926,406
<b>Total District Operating Expenditures</b>	<b>\$806,030,179</b>
Capital Expenditures	133,627,394
<b>Total District Use of Funds</b>	<b>\$939,657,573</b>

## District Use of Funds 2007



## District Debt and Capital Construction & Equipment

Total Outstanding Bonded Debt	\$693,618,979
Average Annual Percentage Interest Rate on Debt	4.67%
Amount Raised from Most Recent Bond	\$323,800,000
Amount Spent on New Buildings During Last 2 Years	\$181,180,849

## Accreditation

Accreditation is Colorado's primary accountability system, incorporating achievement levels, academic growth, achievement gaps, post-secondary readiness, improvement planning, and compliance. The state accredits districts and districts accredit individual schools.

District Accreditation Status for the 2007-2008 school year:

## Voter Approved Funding Changes

Your community did  /did not  hold an election in November 2006

The following items have been approved by voters:

TABOR Override

Bond

Mill Levy Increase

# RALSTON VALLEY SENIOR HIGH SCHOOL



JEFFERSON COUNTY R-1

<http://jeffco.k12.co.us/>

## School Accountability Report 2007-2008 School Year

### School Performance Summary

**Overall Academic Performance on State Assessments** **Excellent**

**Academic Growth of Students** **High**

Winner of a John Irwin School of Excellence for the 2007-2008 School Year

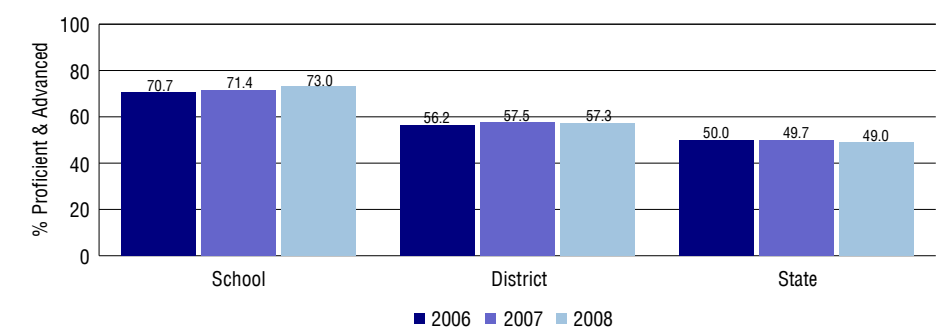
#### Overall Academic Performance on State Assessments

Each school in the State received a rating of "Excellent", "High", "Average", "Low", or "Unsatisfactory" for student academic performance based on 2007-2008 CSAP and COACT results. The rating is calculated using weighted percentages of each CSAP proficiency level for all content area and grade results for the school, as well as average COACT Reading, Writing, and Math Grade 11 results.

#### Academic Growth of Students

Each school in the State received a rating of "Low", "Typical", or "High" for student academic growth based on CSAP results. The calculation method is new for 2007-2008. The rating is calculated using student percentile scores matched over two years. More information about the Overall Academic Performance rating and Academic Growth of Students calculations can be found here: [http://www.cde.state.co.us/cdeassess/SAR\\_Info.html](http://www.cde.state.co.us/cdeassess/SAR_Info.html).

## Percent Proficient and Advanced for High Grades for All Content Areas



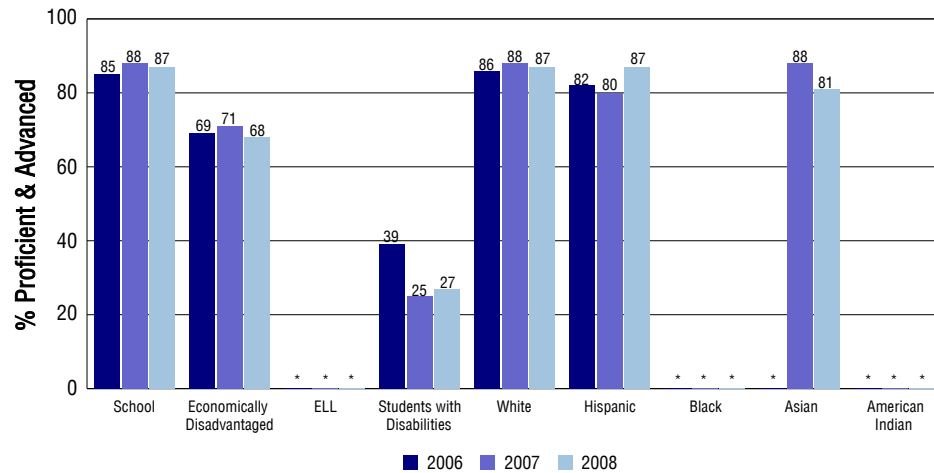
## Student Test Scores Used For Calculating Overall Academic Performance

98.9%	Test Scores Counted
0.6%	Test Scores not used due to Language
0.5%	Test Scores not used due to New Student

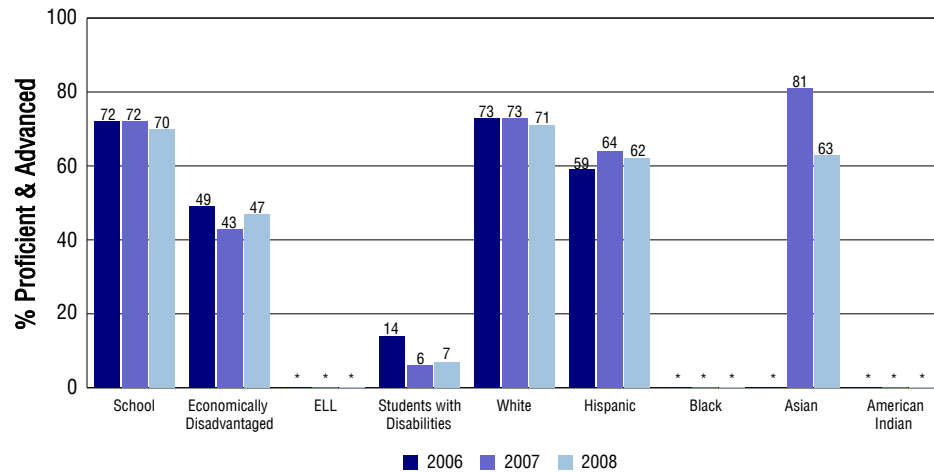
## STUDENT PERFORMANCE

These graphs show the percent Proficient and Advanced trends over the past three years for Reading, Writing, and Math. Results are presented for the entire school for all reported grades as well as for different subgroups. Note: \* indicates any group with less than 16 student results to be reported.

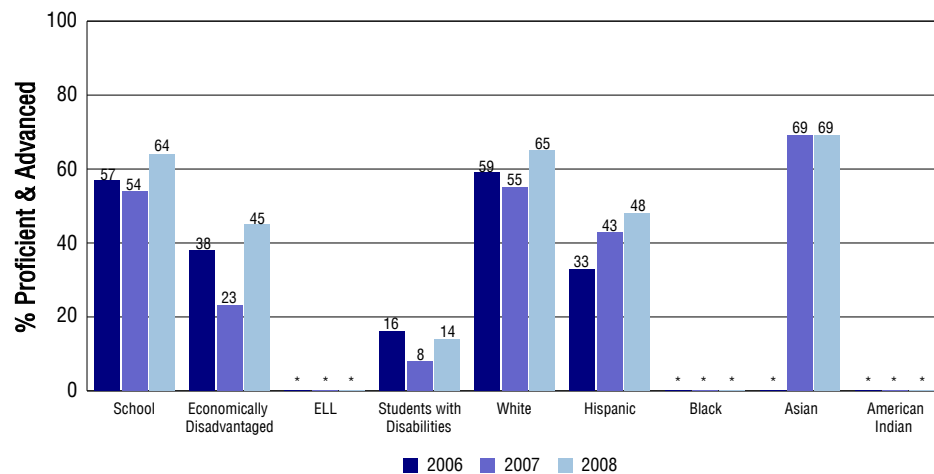
### Reading



### Writing



### Math



## SCHOOL INFORMATION

### School Pride (as submitted by your district)

- Ralston Valley has been rated 'Excellent' for the past three years by the Colorado Department of Education.
- RVHS has highly successful, comprehensive academic, activity, and athletic programs.
- The school enjoys a positive school climate with minimal behavior/discipline issues.
- For more information, visit: <http://www.jeffcopublicschools.org/schools/profiles/high/ralston.html>

### School Goals (as submitted by your district)

Knowing that more than 85 percent of our students go to college following graduation, the faculty, staff, students, and parents continue to focus on a rigorous, college preparatory curriculum. This includes expanding our comprehensive Advanced Placement/Honors program and our focused intervention programs designed to help all students be successful. We continue to expand and refine our already outstanding co-curricular programs in vocal music, instrumental music, performing arts, and fine arts.

### No Child Left Behind - Adequate Yearly Progress

Did your school make AYP in reading?	No	Math?	No
Did your school make the graduation rate targets?	Yes		
How many targets does your school have?	22	Met?	20

Based on this school's academic performance, your child may be eligible for one or more of the following; ask your school if your child qualifies for:

Extra academic instruction either before or after-school, or in the summer  
Mentoring

For additional information regarding Adequate Yearly Progress please visit  
<http://www.cde.state.co.us/FedPrograms/ayp/index.asp>

### How Ralston Valley Senior High School Compares To High Schools Within A 75-Mile Radius

School	Program Type	Academic Performance	Academic Growth
Excel Academy Charter School	Charter	Excellent	No Rating
Arvada West High School		High	Typical
Pomona High School		High	High
Arvada High School		Average	High
Standley Lake High School		High	High
Jefferson Charter Academy Senior High School	Charter	Excellent	High
D'Evelyn Junior/Senior High School		Excellent	High
Compass Montessori - Golden Charter School	Charter	High	Typical
Westminster High School(1)		Low	Typical
Wheat Ridge High School		High	High

1 Located in Westminster 50 School District.

## ABOUT OUR STAFF

### School Employment

Each year, your district reports to the Colorado Department of Education on the number of adults who work in your school, as well as the type of work they do. Last year, your school employed:

	Your School		District	
	Full Time	Part Time	Full Time	Part Time
Teachers	72	8	4639	387
Paraprofessionals	11	4	1223	1211
Administrators	4	1	420	17
Other Professionals	1	2	709	93
School Support	4	17	1902	668
School Counselors	5	0	139	4
School Librarians	1	0	126	22
<b>Total Staff</b>	129		11454	

### Students per Teacher Ratio

	Student Enrollment	Students per Teacher
Grade 9	438	24.2
Grade 10	411	21.2
Grade 11	381	18.7
Grade 12	374	20.2

### Professional Experience of Teachers

	Your School	District
Average years of teaching experience	9	9
Percent of teachers teaching in the subject in which they received their degree	88%	72%
Number of teachers with Masters or Doctoral degrees	56	2928
Teachers with 3 years or more of teaching experience	60	3843
Teachers with less than 3 years of teaching experience	20	1183
Number of professional development days	5	8

### Salaries

	Your School	District	State
Average Teacher Salary	\$52,501	\$52,512	\$47,494
Average Administrator Salary	\$92,457	\$85,523	\$80,444

Principal: James Ellis

Number of years as Principal at this school: 4

Number of years as Principal at any school: 14