

SAFETY AND SCHOOL ENVIRONMENT

Non-CSAP Course Offerings

Your School Offers	does	does not
• art.....	<input checked="" type="checkbox"/>	<input type="checkbox"/>
• drama or theater.....	<input checked="" type="checkbox"/>	<input type="checkbox"/>
• music.....	<input checked="" type="checkbox"/>	<input type="checkbox"/>
• physical education.....	<input checked="" type="checkbox"/>	<input type="checkbox"/>
• opportunity for civic or community engagement.....	<input checked="" type="checkbox"/>	<input type="checkbox"/>
• internet safety program.....	<input checked="" type="checkbox"/>	<input type="checkbox"/>
• International Baccalaureate.....	<input type="checkbox"/>	<input checked="" type="checkbox"/>
• extracurricular activities.....	<input checked="" type="checkbox"/>	<input type="checkbox"/>
• athletics.....	<input checked="" type="checkbox"/>	<input type="checkbox"/>
• career and technical education.....	<input checked="" type="checkbox"/>	<input type="checkbox"/>
• advanced placement.....	<input checked="" type="checkbox"/>	<input type="checkbox"/>
• honors.....	<input checked="" type="checkbox"/>	<input type="checkbox"/>

Safety and Discipline

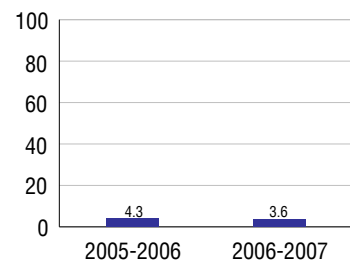
Safe schools are a top priority for parents, teachers, and communities. Your school safety and discipline record for the 2007-2008 school year is:

Type of Incident	Number of Incidents Reported	Percent of Total Incidents
Substance Abuse - Drugs	31	16.9%
Substance Abuse - Alcohol	6	3.3%
Substance Abuse - Tobacco	9	4.9%
Felony Assaults		
Fights	32	17.5%
Possession of Dangerous Weapons	5	2.7%
Other Violations Code of Conduct	100	54.6%

Student Attendance and School Calendar

2007-2008	Your School
Enrollment	1,199
Average Daily Attendance	1,066
Student Dropouts	3.6%

Dropout Rate



Student Information Over Time

	2005-2006	2006-2007	2007-2008
Student Enrollment Stability	94.5%	91.4%	91.4%
Students Eligible for Free and Reduced Lunch	26.2 %	29.8 %	29.3 %

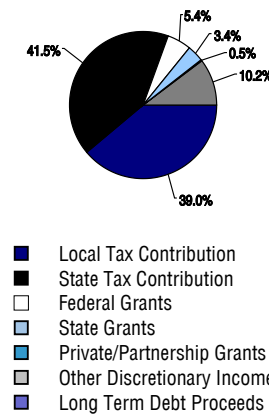
For more information and further details about this report, visit www.state.co.us/schools
 Colorado Department of Education, 201 East Colfax Ave. Denver, CO 80203
Mountain View High School
 1560/6163/H
 3500 Mountain Lion Drive . Loveland, CO 80537 . 970-613-7800
 10/20/2008

DISTRICT TAXPAYER'S REPORT

Sources of School District Revenue 2007

Local Tax Contribution	\$54,301,144
State Tax Contribution	57,873,746
Federal Grants	7,589,486
State Grants	4,769,025
Private/Partnership Grants	708,447
Other Discretionary Income	14,165,599
Total District Operating Revenue	\$139,407,447
Long Term Debt Proceeds	0
Total District Revenue	\$139,407,447
Total District Operating Revenue Per Pupil =	\$9,680
Total District Revenue Per Pupil (Including Long Term Debt) =	\$9,680
District Per Pupil Operating Revenue =	\$5,709
State Average Per Pupil Operating Revenue =	\$6,080

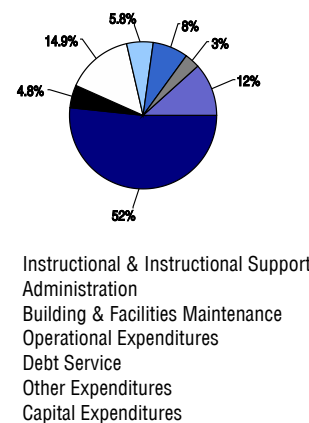
District Source of Funds 2007



District Use of Funds 2007

Instructional & Instructional Support	\$80,892,341
Administration	7,559,890
Building & Facilities Maintenance	23,210,755
Operational Expenditures	9,093,436
Debt Service	12,076,793
Other Expenditures	5,094,851
Total District Operating Expenditures	\$137,928,066
Capital Expenditures	18,372,629
Total District Use of Funds	\$156,300,695

District Use of Funds 2007



District Debt and Capital Construction & Equipment

Total Outstanding Bonded Debt	\$134,174,737
Average Annual Percentage Interest Rate on Debt	4.92%
Amount Raised from Most Recent Bond	\$89,215,000
Amount Spent on New Buildings During Last 2 Years	\$6,430,615

Accreditation

Accreditation is Colorado's primary accountability system, incorporating achievement levels, academic growth, achievement gaps, post-secondary readiness, improvement planning, and compliance. The state accredits districts and districts accredit individual schools.

District Accreditation Status for the 2007-2008 school year:

Voter Approved Funding Changes

Your community did /did not hold an election in November 2006

The following items have been approved by voters:

TABOR Override

Bond

Mill Levy Increase \$6,730,000

MOUNTAIN VIEW HIGH SCHOOL



THOMPSON R-2J

<http://www.thompson.k12.co.us/>
School Accountability Report
2007-2008 School Year

School Performance Summary

Overall Academic Performance on State Assessments

High

Academic Growth of Students

Typical

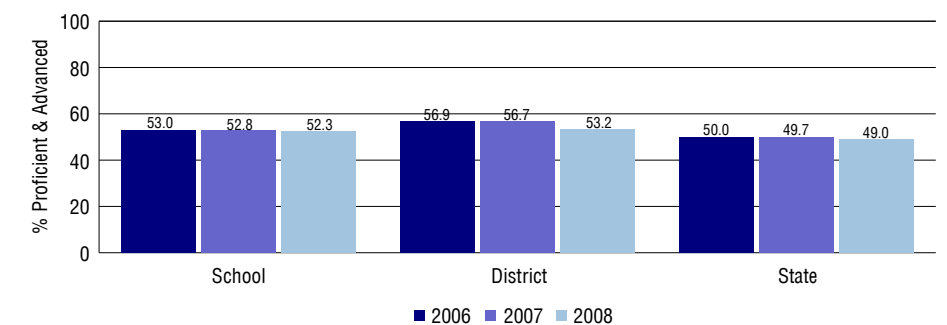
Overall Academic Performance on State Assessments

Each school in the State received a rating of "Excellent", "High", "Average", "Low", or "Unsatisfactory" for student academic performance based on 2007-2008 CSAP and COACT results. The rating is calculated using weighted percentages of each CSAP proficiency level for all content area and grade results for the school, as well as average COACT Reading, Writing, and Math Grade 11 results.

Academic Growth of Students

Each school in the State received a rating of "Low", "Typical", or "High" for student academic growth based on CSAP results. The calculation method is new for 2007-2008. The rating is calculated using student percentile scores matched over two years. More information about the Overall Academic Performance rating and Academic Growth of Students calculations can be found here: http://www.cde.state.co.us/cdeassess/SAR_Info.html.

Percent Proficient and Advanced for High Grades for All Content Areas



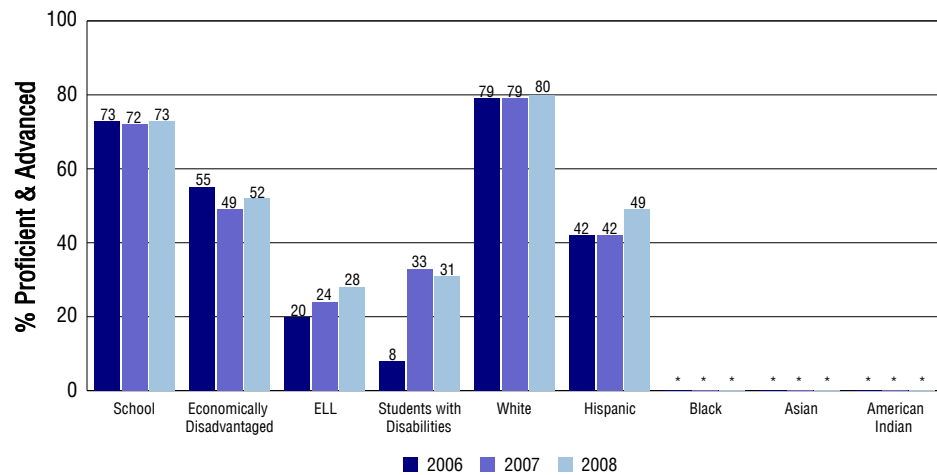
Student Test Scores Used For Calculating Overall Academic Performance

93.5%	Test Scores Counted
0.6%	Test Scores not used due to Language
5.9%	Test Scores not used due to New Student

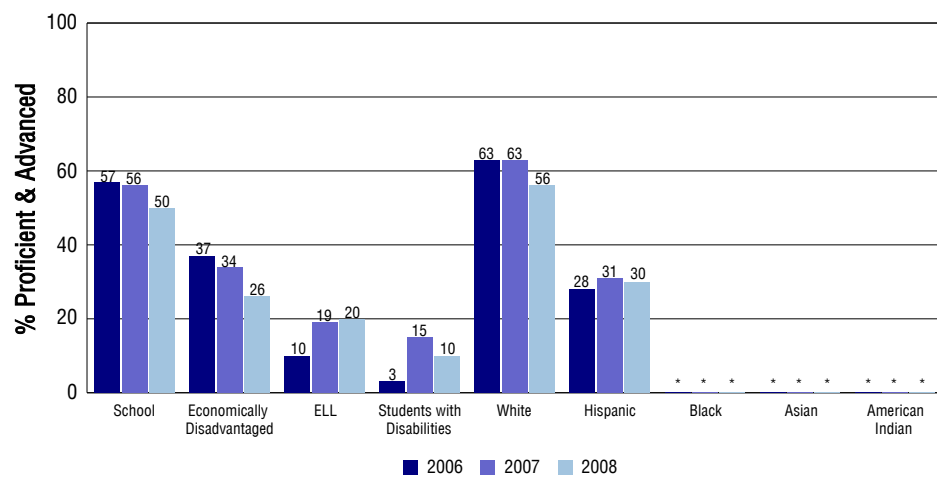
STUDENT PERFORMANCE

These graphs show the percent Proficient and Advanced trends over the past three years for Reading, Writing, and Math. Results are presented for the entire school for all reported grades as well as for different subgroups. Note: * indicates any group with less than 16 student results to be reported.

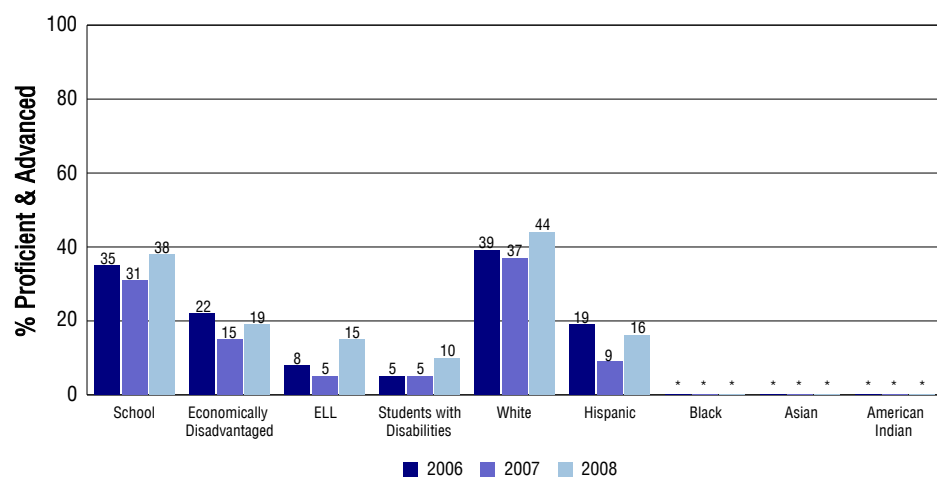
Reading



Writing



Math



SCHOOL INFORMATION

School Pride (as submitted by your district)

- Every MVHS teacher is a reading, writing and a thinking teacher with a clear focus on 21st Century Skills development.
- 4 years of Positive Behavior Support (PBS) implementation through POWER.
- 13 Advanced Placement Courses offered. 9 state championships in eight years.
- Pre engineering program called, Project Lead the Way and Loveland Area Integrated School of the Arts (LISA) art magnet school.

School Goals (as submitted by your district)

30% of all instructional time will be focused on meaningful reading, writing and literacy learning through a framework of skills/strategies. Goals: 1 Instructional Practices (instruction) Data and assessments are important for each student's success. 2 Positive Behavior Support (relationships) We "teach" positive academic expectations through POWER. 3 Public Education and Business Coalition and PEBC Strategy Work (rigor) MVHS will continue thinking and learning strategies. 4 Intervention Programs (intervention) Programs for struggling students build success. 5 School to Life (relevance) Fully implement LISA Arts magnet, while exploring ways to provide 21st Century Skills.

No Child Left Behind - Adequate Yearly Progress

Did your school make AYP in reading?	Yes	Math?	No
Did your school make the graduation rate targets?	No		
How many targets does your school have?	29	Met?	25

Based on this school's academic performance, your child may be eligible for one or more of the following; ask your school if your child qualifies for:

Extra academic instruction either before or after-school, or in the summer
Mentoring

For additional information regarding Adequate Yearly Progress please visit
<http://www.cde.state.co.us/FedPrograms/ayp/index.asp>

How Mountain View High School Compares To High Schools Within A 75-Mile Radius

School	Program Type	Academic Performance	Academic Growth
Roosevelt High School(1)		Average	Typical
Harold Ferguson High School	Alternative	Low	No Rating
Loveland High School		High	Low
Thompson Valley High School		Average	Low
Windsor High School(2)		Average	Typical
Berthoud High School		High	Low
Fossil Ridge High School(3)		Excellent	Low
Polaris Expeditionary Learning School(3)	Alternative	Low	Low
Northridge High School(4)		Low	Typical
Union Colony Preparatory School(4)	Charter	High	Typical

1 Located in Johnstown-Milliken RE-5J School District.

2 Located in Windsor RE-4 School District.

3 Located in Poudre R-1 School District.

4 Located in Greeley 6 School District.

ABOUT OUR STAFF

School Employment

Each year, your district reports to the Colorado Department of Education on the number of adults who work in your school, as well as the type of work they do. Last year, your school employed:

	Your School		District	
	Full Time	Part Time	Full Time	Part Time
Teachers	58	11	794	165
Paraprofessionals	10	2	201	112
Administrators	4	1	70	4
Other Professionals	3	2	118	52
School Support	20	12	319	207
School Counselors	1	5	32	15
School Librarians	1	0	10	0
Total Staff	127		2074	

Students per Teacher Ratio

	Student Enrollment	Students per Teacher
Grade 9	310	17.7
Grade 10	308	17.6
Grade 11	292	17.1
Grade 12	289	25.6

Professional Experience of Teachers

	Your School	District
Average years of teaching experience	8	10
Percent of teachers teaching in the subject in which they received their degree	86%	80%
Number of teachers with Masters or Doctoral degrees	34	414
Teachers with 3 years or more of teaching experience	45	711
Teachers with less than 3 years of teaching experience	24	248
Number of professional development days	9	9

Salaries

	Your School	District	State
Average Teacher Salary	\$42,824	\$44,873	\$47,494
Average Administrator Salary	\$67,753	\$75,714	\$80,444

Principal: Kevin Aten

Number of years as Principal at this school: 6

Number of years as Principal at any school: 6